



NORTH CENTRAL
**CLIMATE
SCIENCE**
CENTER

Brian Miller

bwmiller@usgs.gov

970-491-7659

USGS Director: Jeff Morisette

morisettej@usgs.gov

303-968-8986

(using contributions, insight, and materials from many others...)



Secretarial Order 3289: DOI Climate Science Centers

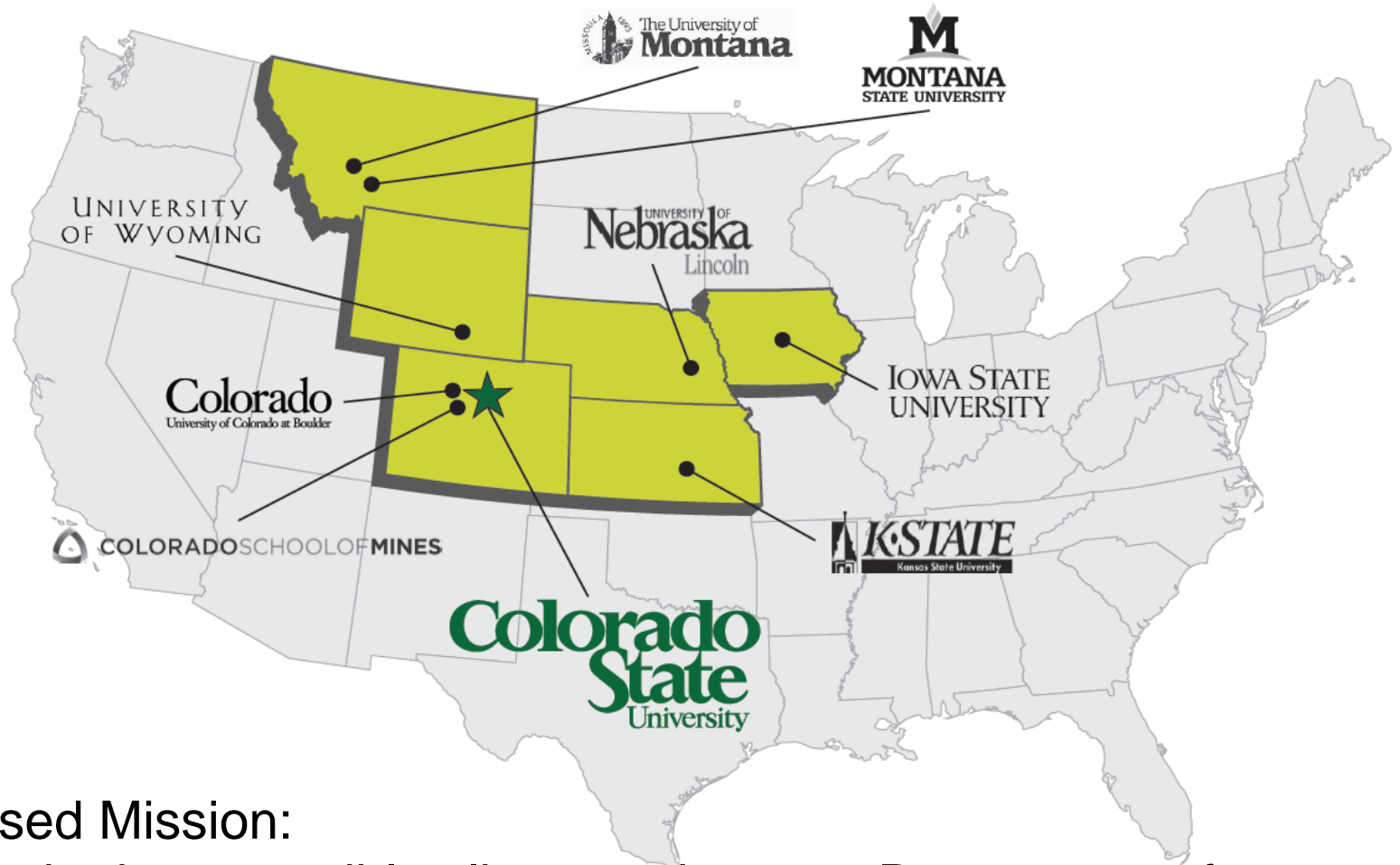


Mission:
To provide the best possible
climate science to Department of
Interior land managers



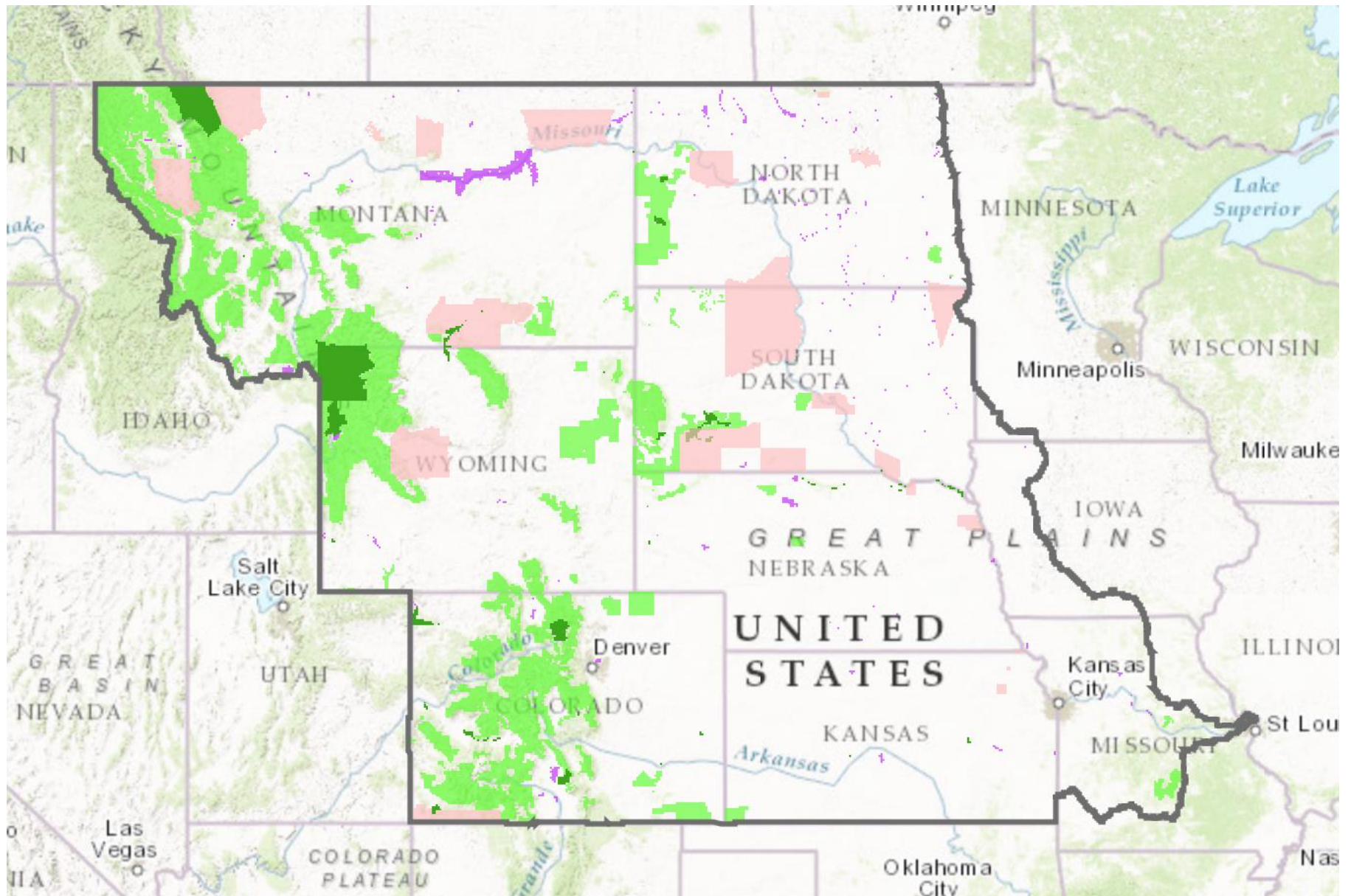


Northcentral Climate Science Center



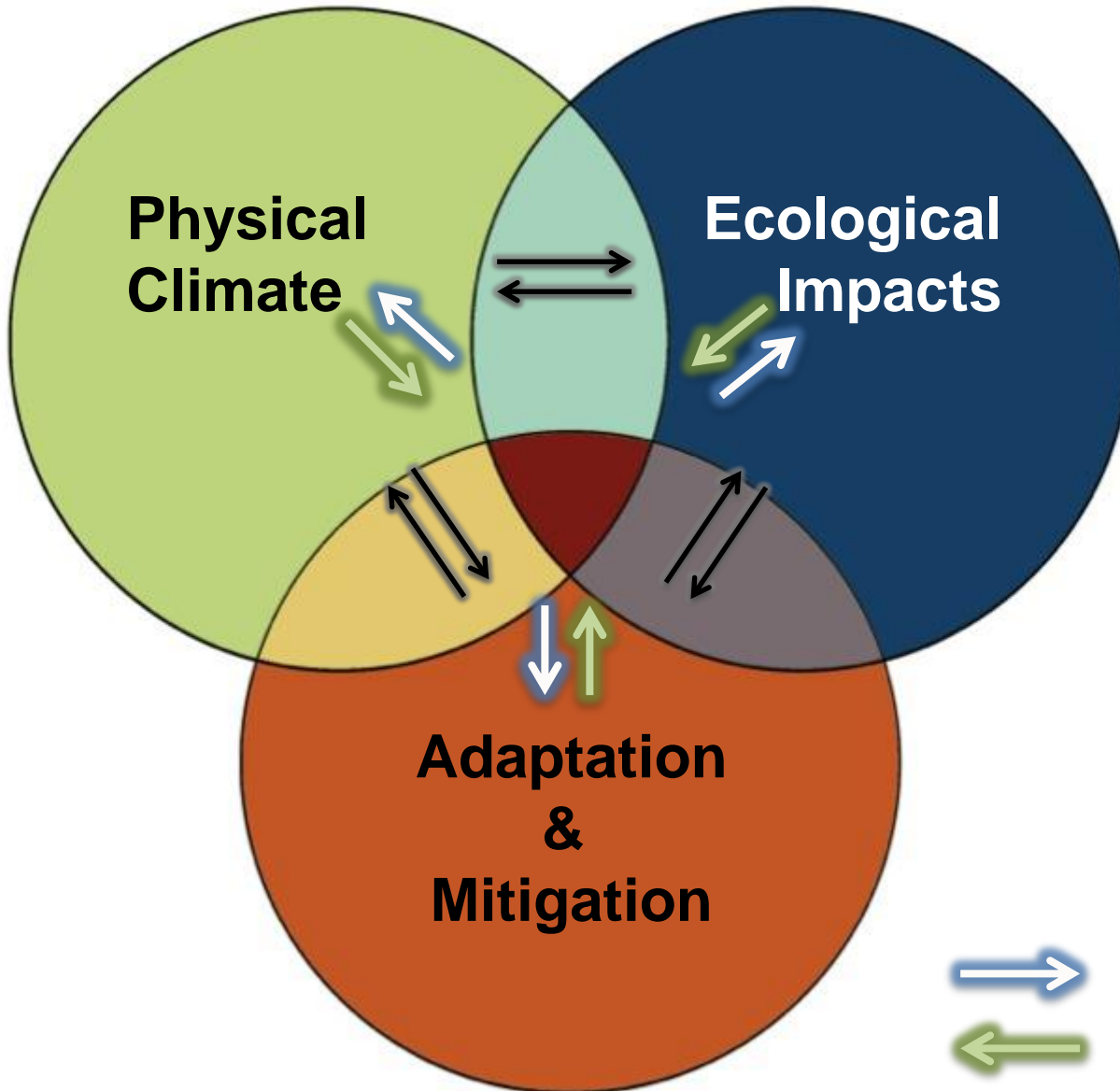
Draft Revised Mission:

To provide the best possible climate science to Department of Interior land managers & provide university and USGS researchers an opportunity to work with an engaged and proactive applied management community.





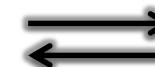
NORTH CENTRAL
**CLIMATE
SCIENCE**
CENTER



Management-driven science

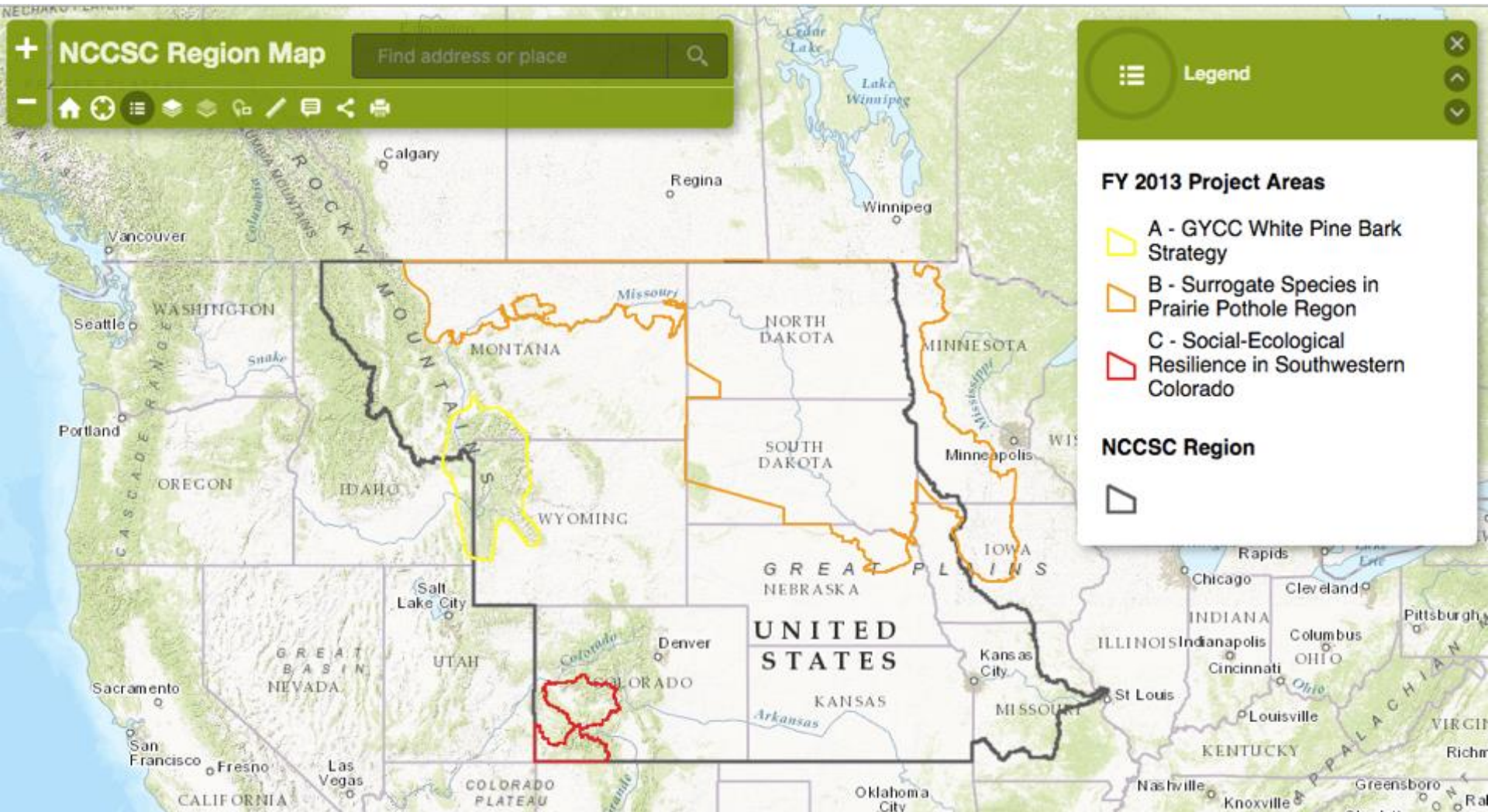


Science-informed management

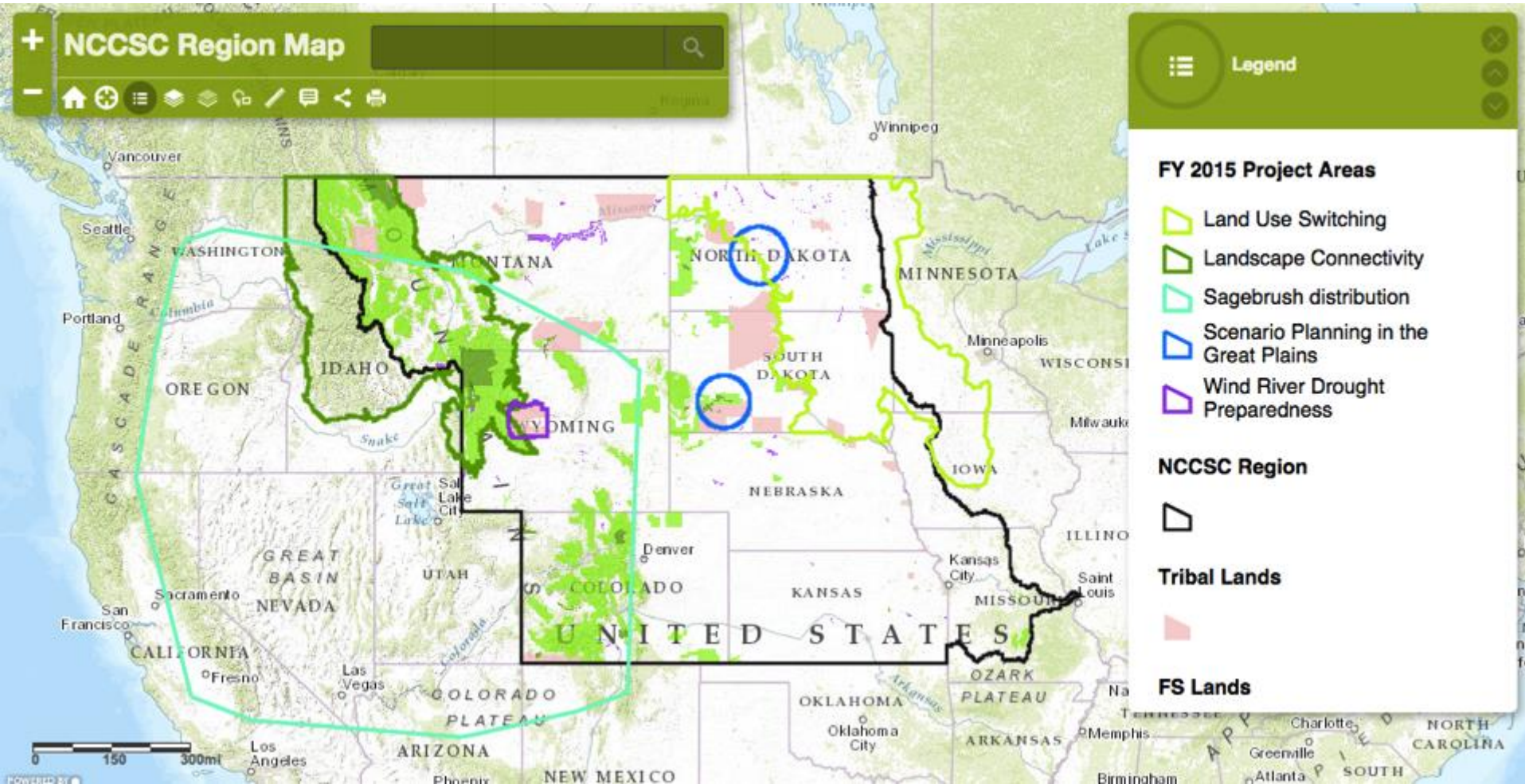


Synergies and leverage

Projects initiated in 2013



Projects initiated in 2015



North Central Climate Science Center additional capacity...

- Climate data
 - including maps, time series graphics
 - consultancy on model, emissions, and downscaling choices.
- Remote sensing products and analysis
 - Including expertise on drought, fire, and phenology data sets
- Ecological response modeling
 - Correlative species distribution modeling
 - Quantitative scenario planning through state-and-transition simulation modeling
- Capacity Building
 - Tribal Phenology Observations through the Indigenous People Climate Change Working Group
 - Deployment of phenology cameras in partnership with the AmericaView program
 - Training sessions through the National Conservation Training Center
- GIS services to combine data and models
- Collaboration and support of extramural proposal writing
- Collaboration on analysis and visualizations through the USGS Resource for Advanced Modeling

More Info...

<http://nccsc.colostate.edu>



NORTH CENTRAL
**CLIMATE
SCIENCE**
CENTER

Contact:

Brian Miller, bwmiller@usgs.gov, 970-491-7659

Jeff Morisette, morisettej@usgs.gov 303-968-8986